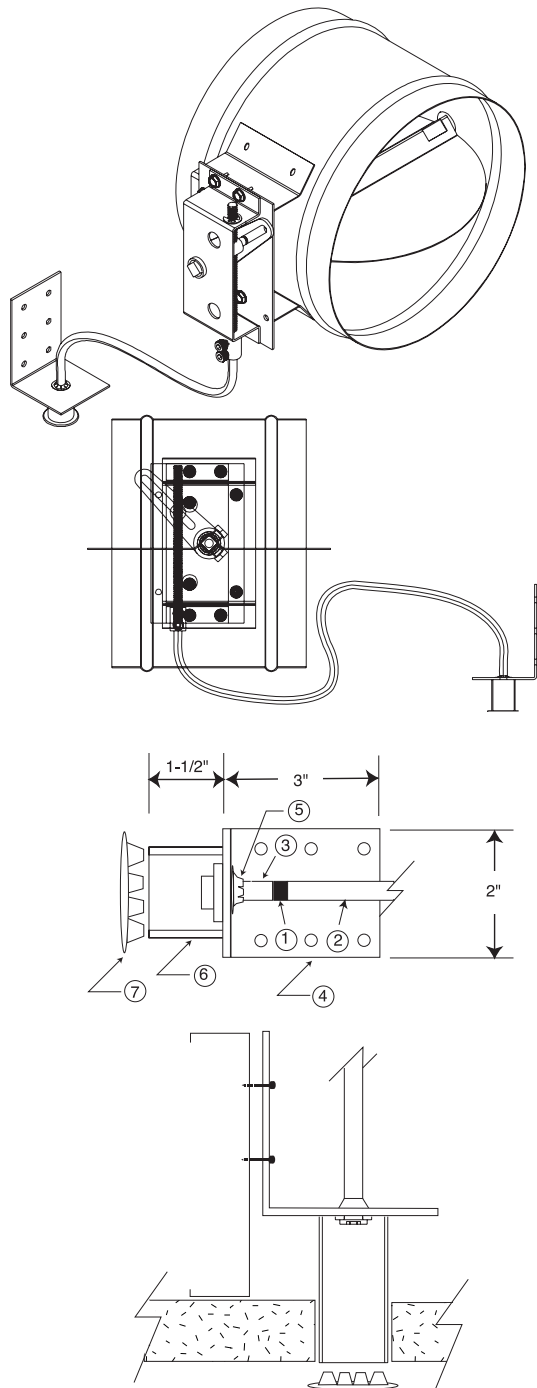


# RCS-10R

## REMOTE CONTROLLED CABLE OPERATED BALANCING DAMPER



Typical Installation Remote Control

### REMOTE CONTROL/CABLE ASSEMBLY

Rotation of allen head at remote location opens (ccw) and closes (cw) damper. Approximately six rotations — open to close.

### SPECIFICATIONS

#### DAMPER ASSEMBLY

- 22 gauge galvanized steel frame, 6" (152.4) long standard. Double beaded for strength.
- 22 gauge galvanized steel blade with center "V" break for added strength.
- Control arm/screw-drive assembly mounted on stand-off bracket.
- All steel parts with galvanized finish or zinc plating.
- Maximum operating temperature is 250°F (121.1°C).
- Maximum velocity 1,500 fpm @ 1" w.g. std. construction.
- Maximum diameter 24" (609.6).
- Minimum diameter 4" (101.6).
- Dampers are supplied approximately 1/8" (3.2) under nominal diameter.

#### REMOTE CONTROL/CABLE ASSEMBLY

- 5/32" diameter flexible metal cable (1).
- U.L. rated outer sleeve (2).
- 3/16" allen drive head (3)
- Steel mounting bracket (4).
- Retaining clip (5).
- 15/16" O.D. steel tube (6).
- 1-13/64" diameter plastic finishing plug (7).
- 36" standard cable included.

### OPTIONS

- Hex tool handle:  STD 3/16"  "T"-handle
- Steel nickel plated finishing plug.
- 2" x 4" galvanized J-box with white plastic cover plate.
- Metal 2" x 4" cover plate.
- Cable lengths:
  - 48"  60"  72"  96"  special
- 20 gauge:  sleeve  blade  both
- 16 gauge:  blade

### FEATURES

- Unit comes completely assembled for ease of field installation.
- Tight sealing nylon bushings prevent rattling and minimize leakage.
- Screw-drive assembly holds the blade in a constant position - regardless of air flow.
- Screw-drive - remote control cable assembly can be provided loose for use with almost any balancing damper.
- Standard 15/16" O.D. steel access tube with finishing plug unobtrusive opening in ceiling or wall for architectural requirements.

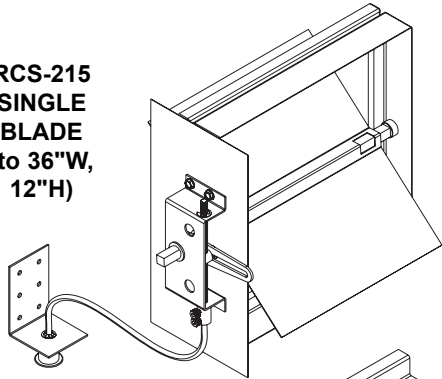


AIR MANAGERS

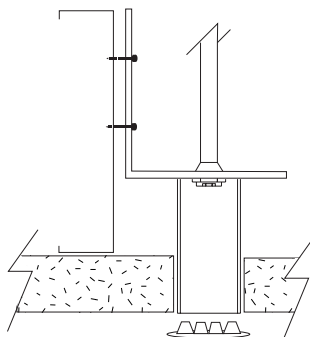
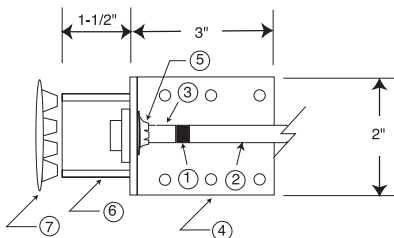
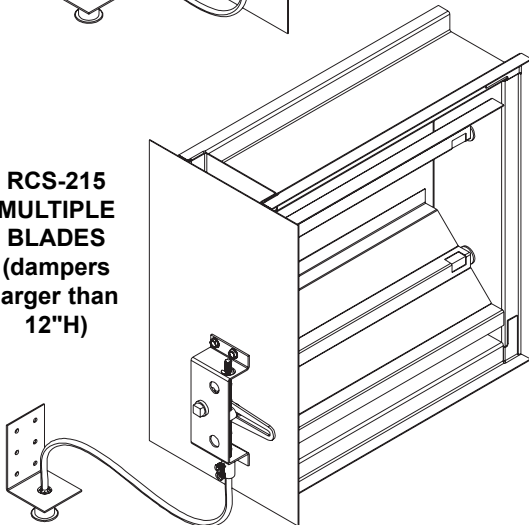
# RCS-42

## REMOTE CONTROLLED CABLE OPERATED BALANCING DAMPER

RCS-215  
SINGLE  
BLADE  
(to 36"W,  
12"H)



RCS-215  
MULTIPLE  
BLADES  
(dampers  
larger than  
12"H)



Typical Installation Remote Control

### REMOTE CONTROL/CABLE ASSEMBLY

Rotation of allen head at remote location opens (ccw) and closes (cw) damper. Approximately six rotations — open to close.

### SPECIFICATIONS

#### DAMPER ASSEMBLY

##### SINGLE BLADE

- 22 gauge galvanized steel frame, frame 2" (50.8) wide standard.
- 22 gauge galvanized steel blade with center "V" break for added strength.
- 3/8" square zinc plated steel blade shafts with tight sealing nylon bushings.
- Control arm/screw-drive assembly mounted on stand-off bracket.
- All steel parts with galvanized finish or zinc plating.
- Maximum operating temperature is 250°F (121.1°C).
- Maximum velocity 1,500 fpm @1" w.g. std. construction.
- Maximum size 36"w x 12"h (915 x 305).
- Minimum size 6"w x 4"h (152 x 102).

##### MULTIPLE BLADES

- 5" hat section galvanized steel frame.
- 16 gauge galvanized steel blades with triple "V" break for added strength.
- 3/8" hex 2" zinc plated steel blade shafts with tight sealing nylon bushings.
- Control arm/screw-drive assembly mounted on stand-off bracket.
- All steel parts with galvanized finish or zinc plating.
- Side mounting plate for installation.
- Maximum operating temperature is 250°F (121.1°C).
- Maximum velocity 1,500 fpm @3" w.g. std. construction.
- Maximum size 36"x 36" (915 x 915).
- Minimum size 5"w x 13"h (127 x 330).

#### REMOTE CONTROL/CABLE ASSEMBLY

- 5/32" diameter flexible metal cable (1).
- U.L. rated outer sleeve (2).
- 3/16" allen drive head (3)
- Steel mounting bracket (4).
- Retaining clip (5).
- 15/16" O.D. steel tube (6).
- 1-13/64" diameter plastic finishing plug (7).
- 36" standard cable included.

### OPTIONS

- Hex tool handle:  STD 3/16"  "T"-handle
- Steel nickel plated finishing plug.
- 2" x 4" galvanized J-box with white plastic cover plate.
- Metal 2" x 4" cover plate.
- Cable lengths:
  - 48"  60"  72"  96"  special
- 20 gauge:  sleeve  blade  both
- 16 gauge:  blade

### FEATURES

- Unit comes completely assembled for ease of field installation.
- Tight sealing nylon bushings prevent rattling and minimize leakage.
- Screw-drive assembly holds the blade in a constant position - regardless of air flow.
- Screw-drive - remote control cable assembly can be provided loose for use with almost any balancing damper.
- Standard 15/16" O.D. steel access tube with finishing plug unobtrusive opening in ceiling or wall for architectural requirements.