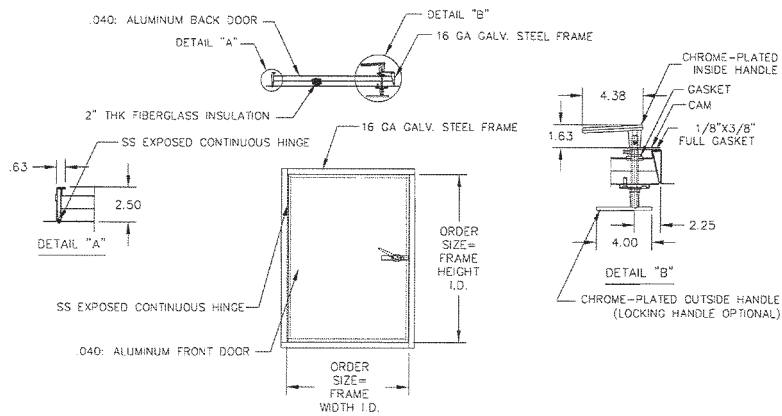


EXTERIOR ACCESS PANEL: MODEL XPA



XPA



NOTE: FOR SIZES 24X24 OR GREATER, USE TWO HANDLES SPACED HALF OF THE ORDER HEIGHT.

NOTES: UNLESS OTHERWISE SPECIFIED

16 Gauge Galvanized Steel Frame

Stainless Steel is also available - Call for Pricing

SPECIFICATIONS: MODEL XPA

- Door: 2" Thick Insulated .040 Aluminum Door.
- Flange: 1" - 16 Ga. Galvanized Steel.
- Exterior Hinge: Stainless Steel.
- Gasketing: EPDM Foam Rubber Bulb Seal.
- Handles: Locking and Non-Locking, Zinc Die Cast with Chrome Plating.
- Handles are factory installed. Panels Are Ready For Installation.
- Finish: Powder Coat Gray Primer.

Catalog#	Size	Wall Opening	No. Handles	List \$
W-12479	12"x12"	12-3/8"x12-3/8"	1	\$284.00
W-12480	14"x14"	14-3/8"x14-3/8"	1	\$303.00
W-12481	18"x18"	18-3/8"x18-3/8"	1	\$370.00
W-12482	24"x24"	24-3/8"x24-3/8"	2	\$549.00
W-12483	24"x36"	24-3/8"x36-3/8"	2	\$631.00
W-12484	24"x48"	24-3/8"x48-3/8"	2	\$755.00
W-12485	30"x30"	30-3/8"x30-3/8"	2	\$631.00
W-12486	36"x48"	36-3/8"x48-3/8"	2	\$919.00

*For key lock on above doors add \$25.00 list.

